

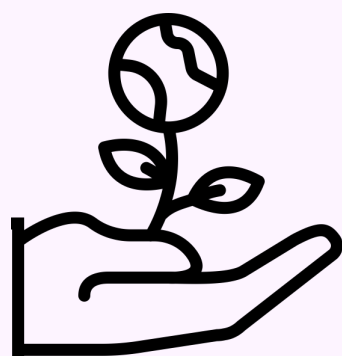
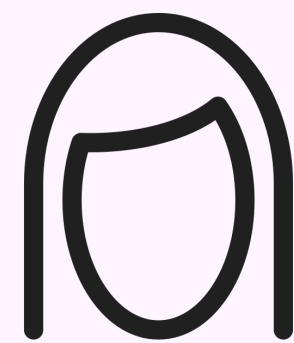


# WE CO VOLUNTEER TRIPS

.....

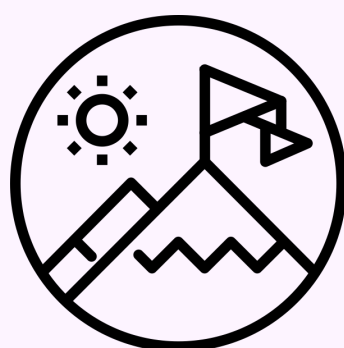
- Tourism and 'Voluntourism' are well-established industries, which means there is much potential for travelers to influence the places they visit.
- WE CO curates and facilitates responsible travel experiences that carry positive community impact. Throughout project travel, we consider local partners and communities.

HOLISTIC WOMEN'S EMPOWERMENT



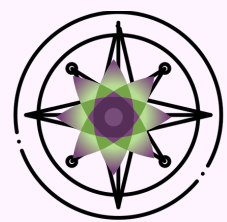
AUTHENTIC COMMUNITY WORK

RESPONSIBLE & ETHICAL TOURISM

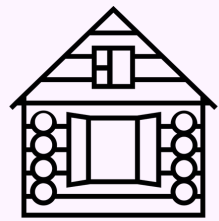


MEANINGFUL TRAVEL EXPERIENCES

# HOW WE TRAVEL



**Hire** fairly paid area guides



**Stay** in locally-owned accommodation



**Participate** in grassroots initiatives to resolve gender inequalities



**Learn** from artisans about community traditions and culture

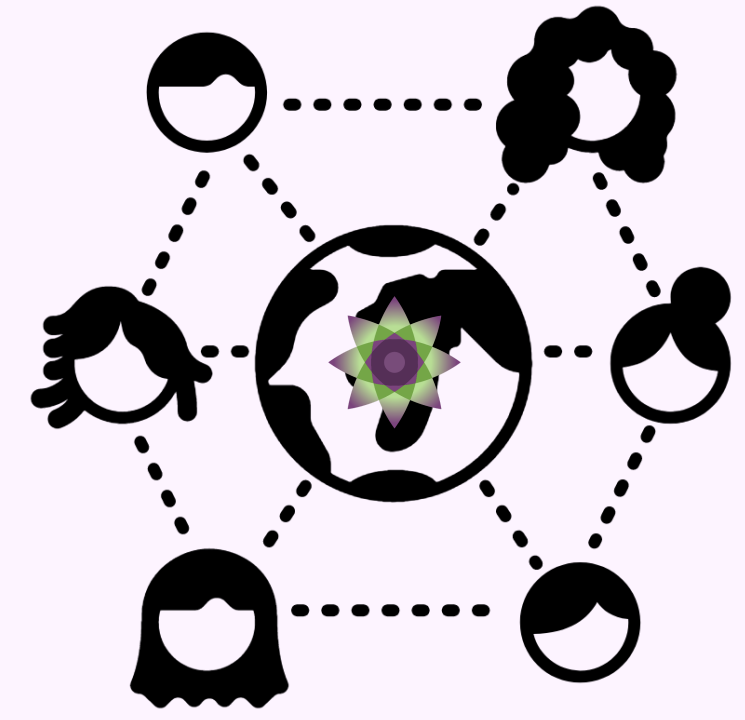


**Visit** and interact with area wildlife sustainably

- Besides meeting these responsible travel guidelines, we provide resources and support to our volunteers who help us fundraise for project costs. In addition, we handle all travel logistics for the duration of the volunteer trip.

- This includes project planning and pre-departure assistance; research on and booking of flights, accommodation, ground transportation, and sustainable tourism activities; and coordination of volunteer arrival and departure schedules.

# HOW WE WORK



**Projects** are needs-based and revolve around our partners' existing programs. They typically fall in the range of **\$15,000 to \$20,000**



**Partners** work with us to create a feasible timeline for the project and project trip



**Volunteers** fundraise for a portion of the project and can expect total trip costs to be around **\$3,000**

- We have education and business development projects in India, Cambodia, Peru, and Costa Rica.
- Depending on group needs and interests as well as location, project trips vary in length and can be anywhere from 7 to 21 days.
- Volunteer work also varies from project to project and can include: education workshops and/or trainings, building projects and moderate manual labor, painting and maintenance, debris pick-up and facility cleaning, farm work, and related activities.